

REQUIRED TOOLA

Hexagon socket spanner:
1 x 3mm for top cap & bike computer mount
2 x 4mm for stem bolts

PREPARATION

If present, remove the compression ring, O-ring and seal clamping ring from the original adapter and insert them into the Beast adapter. If you require a customised compression ring or steerer adapter for your frame, these are included in the scope of delivery (especially for D-Shape or frames with a 1" steerer tube).

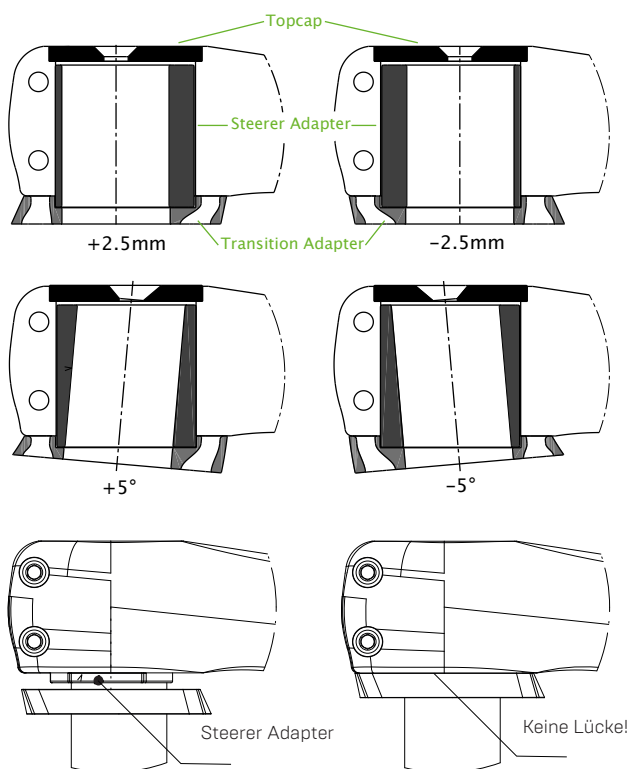
Also follow all instructions and information in the operating instructions of the fork, headset and cockpit unit manufacturers. Never exceed the specified tightening torque!

The clamping areas of the steerer tube of your fork and those of the cockpit unit must be clean and dry for installation.

STEERER ADAPTER ADJUSTMENT OPTIONS

You can fit the steerer adapter in these four variants (see illustration). No other combinations are possible.

Important: The steerer adapter must completely disappear into the transition adapter.



CUSTOMISATION

Before routing the brake lines and final mounting of your cockpit unit, you should assemble all components (fork, headset, spacers, cockpit unit) and adjust them according to your body constitution and preferred seating position.

Make absolutely sure that there is a gap of 5 to max. 8 mm between the upper edge of the shaft tube and the cockpit unit.

If your cockpit unit is fitted in the desired position, mark the steerer tube with a marker. If necessary, shorten the steerer tube of your fork according to the marking or change the overall height of the spacers.

ROUTING THE BRAKE LINES

1. ICR-Method (intern)

1.1. From the frame:

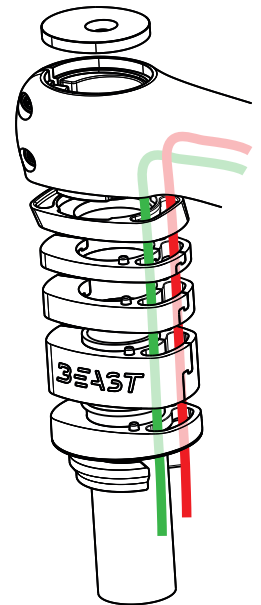
Thread the brake line through the frame from below so that it sticks out of the head tube. Give the brake line about 2 cm of play so that it is not too tight in the frame.

1.2. From the brake lever:

Slide the brake line from the brake lever side through the entrance opening. A guide aid should be used for this. As this work is carried out before the cockpit unit is installed, the brake levers should already be mounted.

Important:

Full internal cable routing is only possible when electronic shift groups are used, because the channels are only provided for brake lines.



2. ECR-Method (extern)

With this method, route the brake line from the centre entry openings of the cockpit unit to the brake lever opening.

FIXING THE BRAKE LINES & LEVERS

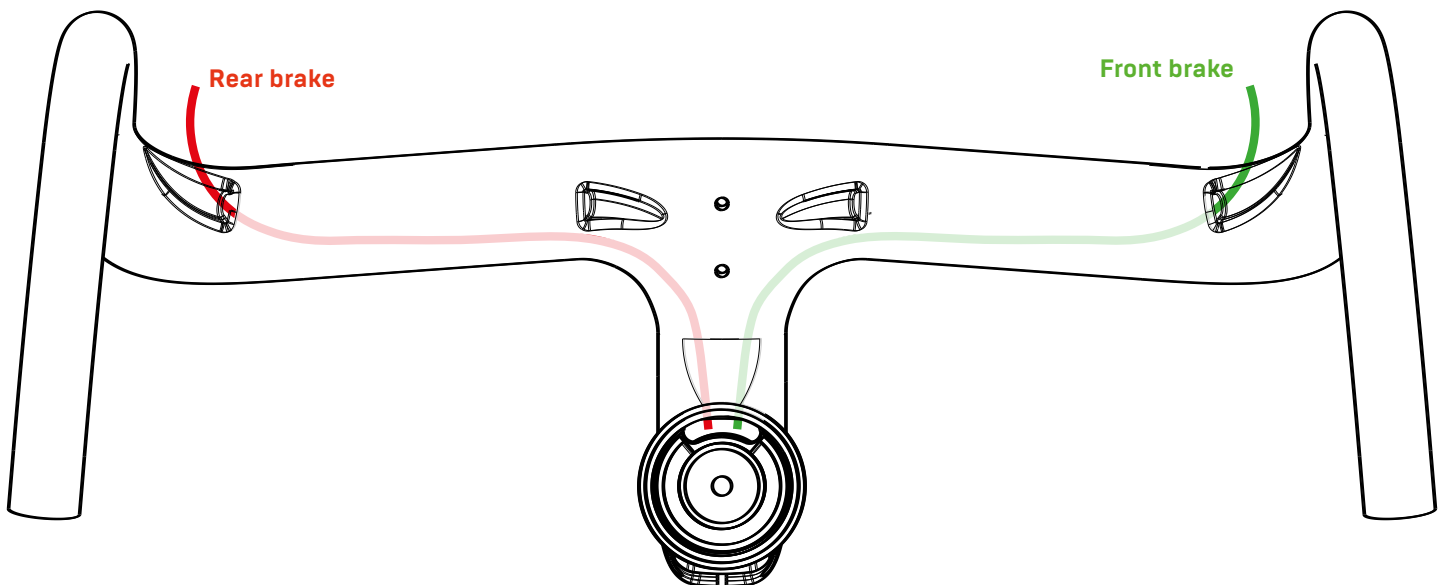
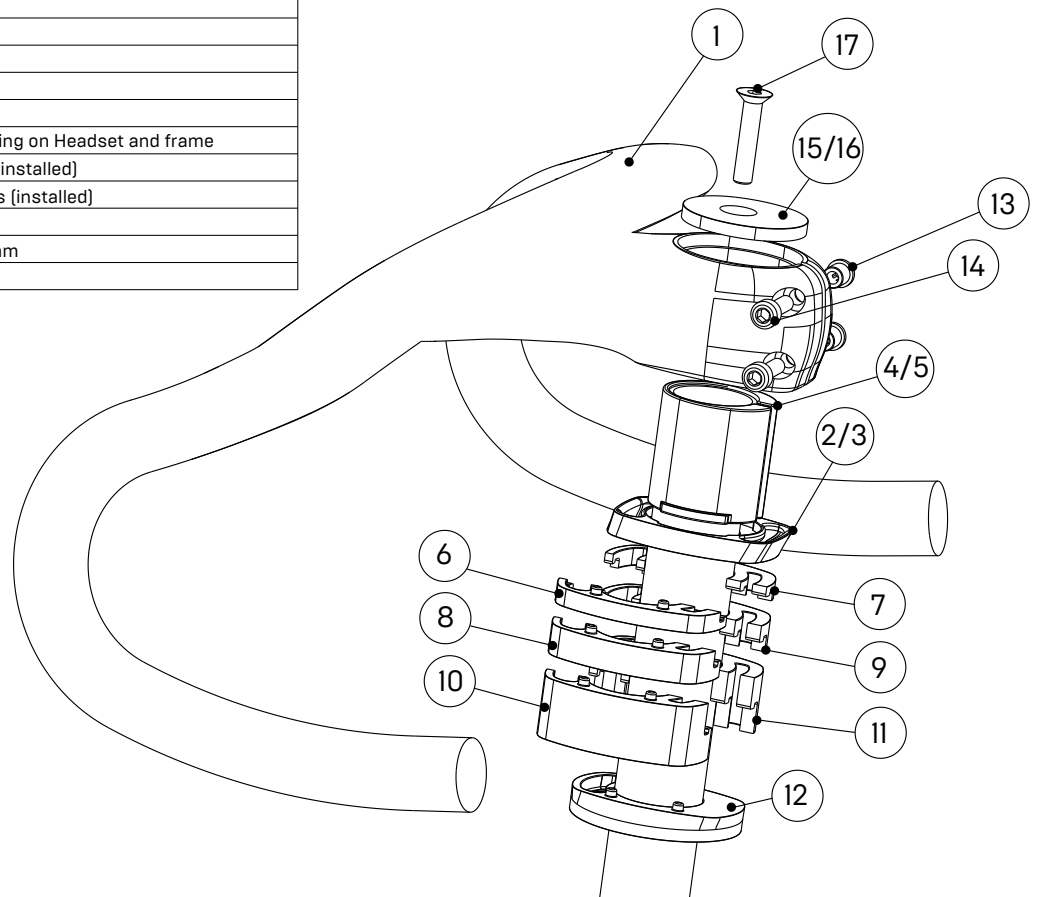
If necessary, trim the brake line to the correct length depending on the manufacturer's instructions.

Position the brake levers and screw them together with a maximum tightening torque of 4 Nm.

Connect the brake line to the brake levers. Make sure that the lines are routed correctly and without kinks and test the brake function.

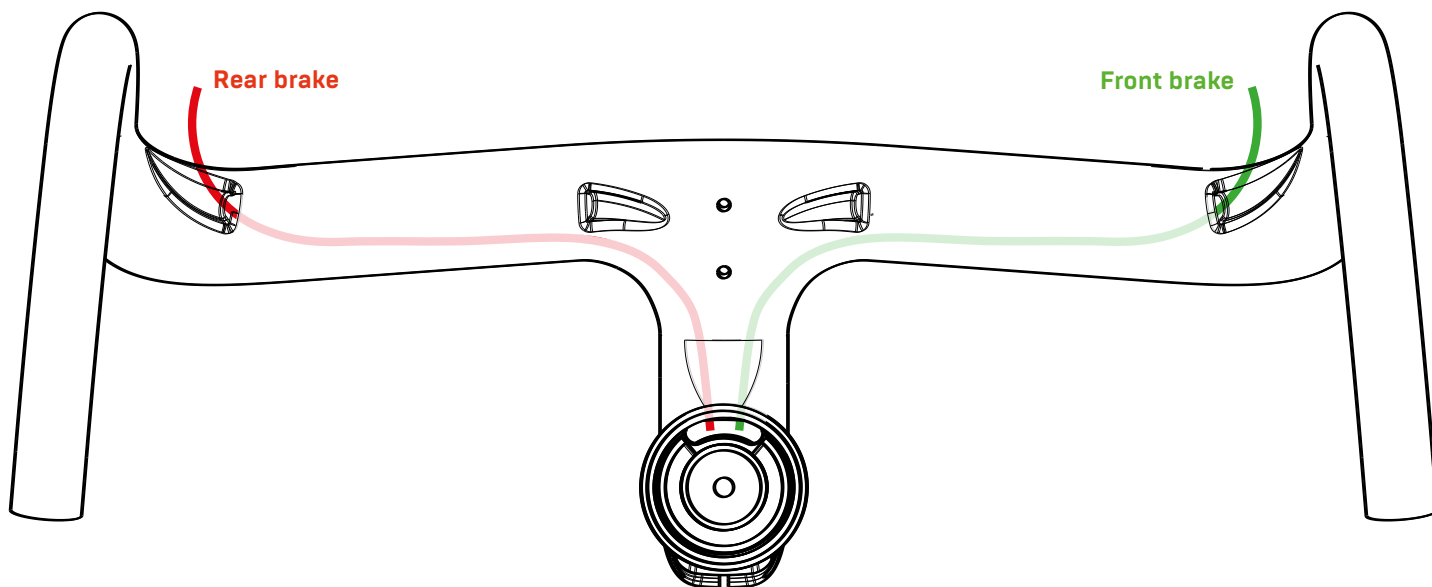
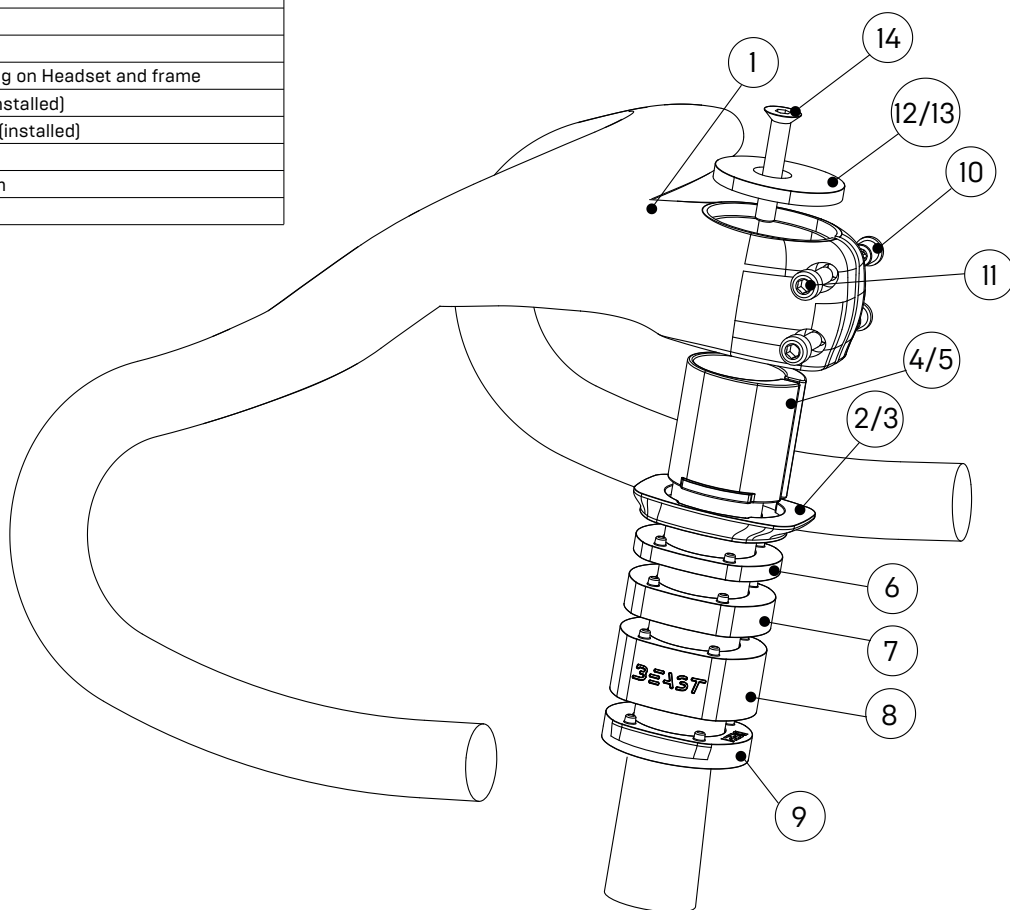
Parts List: BEAST Cockpit Unit for internal cable routing

Number	Name
1	Cockpit Unit Road / Allroad / Gravel
2	Transition Adapter Angle +/-5deg
3	Transition Adapter Length +/-2.5mm
4	Steerer Adapter Angle +/-5deg
5	Steerer Adapter Length +/-2.5mm
6	Spacer-6mm left
7	Spacer-6mm right
8	Spacer-10mm left
9	Spacer-10mm right
10	Spacer-20mm left
11	Spacer-20mm right
12	Headset-Cover depending on Headset and frame
13	Clamping M5-Sockets (installed)
14	Clamping M5x18 Screws (installed)
15	Topcap Angle +/-5deg
16	Topcap Length +/-2.5mm
17	M6x35



Parts List: BEAST Cockpit Unit for external cable routing

Number	Name
1	Cockpit Unit Road / Allroad / Gravel
2	Transition Adapter Angle +/-5deg
3	Transition Adapter Length +/-2.5mm
4	Steerer Adapter Angle +/-5deg
5	Steerer Adapter Length +/-2.5mm
6	Spacer-6mm
7	Spacer-10mm
8	Spacer-20mm
9	Headset-Cover depending on Headset and frame
10	Clamping M5-Sockets (installed)
11	Clamping M5x18 Screws (installed)
12	Topcap Angle +/-5deg
13	Topcap Length +/-2.5mm
14	M6x35



FINAL MOUNTING

After you have routed the brake lines through the adapters and the cockpit unit (only if the cables come from the frame), reconnect the fork, headset, the spacers adjusted to your seat position and the cockpit unit. Then adjust the headset so that there is no play. Please use the supplied mounting paste on the inside of the steerer adapter to ensure that the components fit together perfectly.

Adjust the cockpit unit straight to the front wheel and tighten the stem bolts gradually and alternately with max. 6 Nm.

Make sure that the cockpit unit cannot be rotated. Repeat this check after mounting the front wheel.

MOUNTING OF BIKE COMPUTERS

- When mounting bike computers, only use holders that are compatible with M5 screws and with a hole distance of 23 mm.
- Screw the bike computer bracket to the cockpit unit using the pre-installed M5 screws. The maximum tightening torque of 3 Nm must be observed! We advise you to use a screw lock to prevent the screws from loosening due to vibrations caused by uneven ground.
- Make sure that the holder is correctly secured before using your bike computer!

SAFETY ADVICE

Before starting your journey, always ensure that your Beast Components products are undamaged. Damage can lead to component failure and thus to serious injury or even death. Defective components should not be used under any circumstances and should be replaced immediately. If you are unsure, please contact us or a specialist dealer.

The following points should always be observed:

- After every crash and impact, the cockpit unit must be inspected for hairline cracks, nicks and dents. For this purpose, the cockpit unit should be completely demounted. Even if no obvious defects such as cracks, deformations or similar are recognisable, we can no longer provide a guarantee of safe operation. Please seek advice from a specialist dealer or contact us. If in doubt, the cockpit unit should be replaced.
- Make regular checks to ensure that the screws are sufficiently tight. It is essential to follow the maximum tightening torque (see section "Mounting").

- Check the cockpit unit regularly for signs of material fatigue and stresses, e.g. cracks and dents.
- Only clean your cockpit unit with water or, if necessary, with a commercially available cleaning agent.

Correct maintenance and care will guarantee a long lifetime and reliable functionality.

We welcome any kind of feedback, whether praise, criticism or suggestions. Feel free to send us photos of your bikes with our BEAST components.

#RELEASEYOURBEAST & KEEP ON RIDING!

CONTACT US

Black East GmbH
BEAST Components
Hermann-Mende-Str. 5-7
01099 Dresden
info@beast-components.de
www.beast-components.de